

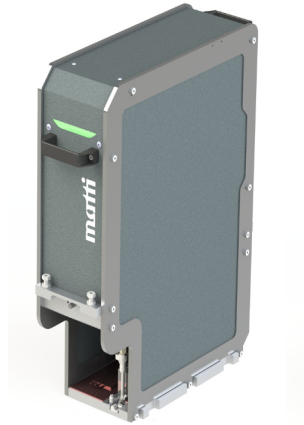
# Matti Technology AG

## Solution for Economical high quality on demand printing

The MonoJet MJ216 Printing System is simple to integrate tough and reliable and can be used with a wide range of fluids.

An industrial solution ideally suitable for adding security coding, barcoding, addressing, text, logos, pictures and spot colour.

**YOUR VISION  
OUR  
MISSION**



**Matti**  
Monojet  
MJ216

## Explore variable data printing opportunities.

### **MonoJet Heredity:**

The Monojet MJ216 is part of a much broader family all offering cost effective, innovative and reliable solutions to give the functionality desired; each solution can be customised to meet your specific business needs.

### **Expand your capabilities:**

The MJ216 allows you to offer added value to document printing, creating greater opportunities.

The system can be integrated into a multitude of printing processes from offset presses to finishing equipment.

Perfect for transactional, transpromo, security print, direct mail, label and packaging applications.

### **Ideas and Opportunities:**

The MJ216 is a fully featured standalone economic solution, with web speeds of up to 150 mtrs/min, versatile fluid compatibility, offering inks for coated and uncoated stocks.

The 3 level greyscale allows for high quality picture reproduction.

Typically used in transactional, commercial printing, packaging, corrugated packaging, folded cartons, labelling and ceramic printing industry sectors.

Can be used in Web presses, Sheet presses or Large flatbed systems.

### **Integration:**

Integration services are available from Matti including base modules for imprint heads.

**matti**  
inkjet web solution

## Jetting Modules:

One print station can drive up to four print heads.

## Key Features: -

- Kyocera KJ4B Series printhead (Recirculation structure through the printhead)
- Compatible inks: Aqueous and UV.
- Print width: 216 mm
- Number of inks: 1
- Resolution: 600 X 600 DPI – optional 1200 x 1200 DPI

## Discover more about Matti Technology Solutions:

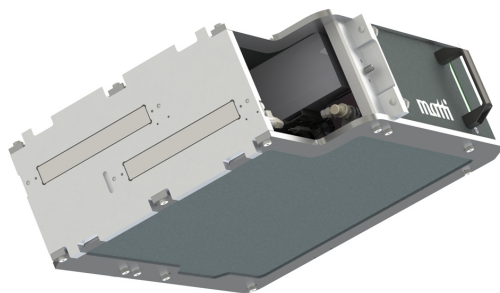
Go to: [www.mattitech.ch](http://www.mattitech.ch)

or

arrange a visit at:

**Matti Technology AG**  
Industriestrasse 9  
CH-8583  
Sulgen  
Switzerland

Email: [info@mattitech.ch](mailto:info@mattitech.ch)  
Tel: +41 71 424 09 40



# Single Colour Printing System

Fully featured  
“Standalone”  
IMPRINT system.

## Drying:

The optional Matti drying units feature hot air and IR/NIR drying.

Drying functions are controlled from the main control panel allowing precise temperature settings up to a maximum of 100°C.

## Cleaning and Capping:

Cleaning and capping of the active nozzles are carried out manually.

## Technical:

- Drop on Demand (DOD)
- Compatible ink: Aqueous and UV inks
- Recirculating ink configuration
- Max Jetting Frequency: up to 80 Khz (1200dpi).
- Resolution: 600 X 600 DPI or 1200 X 1200 DPI “subject to application”
- Print width: 216 mm (8.5”)
- Minimum drop volume: 1.5 pl
- Maximum drop volume 7.0 pl
- Single-pass printing at up to 150 m/min
- Print Head Size:

Width 400mm

Height 450mm

Depth 150mm

Head measurements are approximate.

## Digital Front End:

The press is operated via a Matti Digital Front End (DFE) containing Harlequin RIP software, job queue and parameter adjustments of the print head. Capable of processing PDF files and options to process IPDS (Intelligent Printer Data Stream) files and custom interfaces to access databases.

The DFE provides a top-level view of the inkjet printer and allows the operator to manage print jobs (job queue), prepare the files for print (RIP) and parameterise all aspects of the imprint system, such as dryer set points (if using a Matti dryer), ink delivery system and interfacing with host devices.

## Ink Delivery System:

The Ink Delivery System (IDS) provides capacity for 1off 10 litre cubic of ink.

The IDS pumps the ink from the cubic preconditions the ink before sending it on to the sub-tank in the printbar.

Preconditioning consists of filtering and degassing of the inks. Filters and degassers are easily accessible; tubes and sealings are of highest possible compatibility to the broadest range of inks.

**matti**  
inkjet web solution